

## **Awatapu College (198) Draft Enrolment Scheme**

**Effective from: 1 March 2024**

The guidelines for development and operation of enrolment schemes are issued under Schedule 20 of the Education and Training Act 2020 for the purpose of describing the basis on which the Secretary's powers in relation to enrolment schemes will be exercised.

### **Home Zone**

All students who live within the home zone described below and shown on the attached map shall be entitled to enrol at the school. Both sides of each road are included in the zone unless otherwise stated.

In a clockwise direction:

1. The zone begins at the intersection of Rangiotu Road, Puketotara Road, and Pyke Road, and travels east on Rangiotu Road to its intersection with Opiki Road and Rangitane Road. Addresses on Pyke Road south of the intersection of Pyke Road and Baines Road are in zone. Addresses on Main Drain Road south of the intersection of Main Drain Road and Hoihere Road are in zone.
2. From the intersection of Rangiotu Road, Opiki Road and Rangitane Road (SH56), the zone travels east on SH 56 to its intersection with the Mangaone Stream. All addresses on Tiakitahuna Road south of No. 1 Line, Karere Road south of No. 1 Line, Reserve Road south of No. 1 Line, and Longburn Rongotea Road south of No. 1 Line are in zone. No addresses on No. 1 Line are in zone.
3. From the intersection of SH 56 (Pioneer Highway) with the Mangaone Stream, the zone follows the Mangaone Stream to its intersection with Highbury Avenue. Only addresses south of the Mangaone Stream are in zone.
4. From the intersection of the Mangaone Stream and Highbury Avenue the zone follows Highbury Avenue south to its intersection with Brentwood Avenue. No addresses on Coventry Street are in zone.
5. At the intersection of Highbury Avenue and Brentwood Avenue, the zone follows Brentwood Avenue east to its intersection with Botanical Road. Addresses numbered on Haversham Street, Farnham Avenue, Cowley Place, and Croydon Avenue are in zone.
6. From the intersection of Brentwood Avenue and Botanical Road the zone travels south on Botanical Road to its intersection with Chelwood Street. 121 A and 121B Botanical Road are in zone. No addresses Featherston Street are in zone.
7. At the intersection of Botanical Road and Chelwood Street, the zone travels east on Chelwood Street to its intersection with Bryant Street. All addresses numbered on Shamrock Street are in zone. No addresses on Kingswood Street are in zone. No addresses on Lyndhurst Street or Bryant Street north of their intersections with Chelwood Street are in zone.

8. From the intersection of Chelwood Street and Bryant Street, the zone travels south on Bryant Street to its intersection with Main Street. Addresses on Cuba Street west of Pascal Street are in zone.
9. At the intersection of Bryant Street and Main Street, the zone travels east on Main Street to its intersection with Cook Street. Addresses on Cook Street south of Willis Street, and on Main Street west of Domain Street are in zone.
10. From the intersection of Main Street and Cook Street the zone travels south on Cook Street to its intersection with Church Street.
11. At the intersection of Cook Street and Church Street, the zone travels east on Church Street to its intersection with Pitt Street.
12. From the intersection of Church Street and Pitt Street, the zone travels south on Pitt Street to its intersection with Ferguson Street. 287 Ferguson Street is in zone.
13. At the intersection of Pitt Street and Ferguson Street the zone continues south on South Street to its intersection with College Street
14. From the intersection of South Street and College Street the zone follows College Street east to its intersection with Fitzherbert Avenue. Addresses on Nicolas Lane, Linton Street and Chaytor Street are in zone. 142 and 139/1-3 Fitzherbert Avenue are in zone.
15. At the intersection of College Street and Fitzherbert Avenue the zone continues east on College Street to its intersection with Albert Street. No addresses north of College Street are in zone. No addresses on Albert Street are in zone.
16. From the intersection of College Street and Albert Street the zone returns west on College Street to its intersection with Victoria Avenue.
17. At the intersection of College Street and Victoria Avenue the zone travels south Victoria Avenue to its intersection with Te Awe Awe Street. All addresses on Dawson Court, Lincoln Terrace, and Lincoln Court are in zone.
18. From the intersection of Victoria Avenue and Te Awe Awe Street the zone travels east on Te Awe Awe Street to its intersection with Albert Street before returning west along Te Awe Awe Street back to its intersection with Victoria Avenue. No addresses on Albert Street are in zone. All addresses on Ihaka Street and Pastoral Lane are in zone.
19. At the intersection of Te Awe Awe Street and Victoria Avenue the zone travels south on Caccia Birch Lane to the pedestrian bridge over the Hokowhitu Lagoon.
20. From the pedestrian bridge over the Hokowhitu Lagoon, the zone travels southeast through the Manawatū Golf Club to the Manawatū River. Addresses on Centennial Drive, Awanui Avenue, Te Ara Lane, and Kanuka Drive are in zone.
21. From at point on the Manawatū River adjacent to the Manawatū Golf Club the zone follows the Manawatū River northeast to the Napier Road Bridge. Only addresses on the southern side of the Manawatū River are in zone.
22. At the Napier Road bridge over the Manawatū River the zone travels south on Napier Road to its intersection with Fitzherbert East Road (SH 57). Addresses on Napier Road, south of Fitzherbert East Road are not in zone.

23. From the intersection of Napier Road and Fitzherbert East Road (SH 57), the zone follows Fitzherbert East Road west to its intersection with Pahiatua Aokautere Road. Addresses on Centre Road, Back Road, Gardiners Road, and Forest Hill Road are in zone.
24. At the intersection of Fitzherbert East Road and Pahiatua Aokautere Road the zone travels south on Pahiatua Aokautere Road to its intersection with South Range Road. Addresses on roads accessible from Pahiatua Aokautere Road are in zone. 81 and 86 North Range Road are in zone. Addresses on Pahiatua Aokautere Road south of South Range Road are not in zone.
25. From the intersection of Pahiatua Aokautere Road and South Range Road, the zone follows South Range Road south to the end of the road.
26. At the end of South Range Road, the zone travels overland following in zone land parcels to the end of Albert Road. All addresses on Scotts Road are in zone.
27. From the end of Albert Road, the zone follows Albert Road north to its intersection with Makerua Road (SH57).
28. At the intersection of Albert Road and Makerua Road (SH 57), the zone follows Makerua (SH 57) south to its intersection with Victoria Road before returning north along Makerua Road (SH 57) north to its intersection with Karaka Street. No addresses on Victoria Road are in zone. Addresses on Tamatarau Road are in zone.
29. From the intersection of Makerua Road (SH 57) and Karaka Street, the zone follows Karaka Street north onto Ashlea Road and continues north on Ashlea Road to its intersection with Opiki Road (SH 56). Addresses on Nikau Street are in zone.
30. At the intersection of Ashlea Road and Opiki Road (SH 56), the zone follows Opiki Road (SH 56) south to its intersection with Te Rewa Road, before returning north on Opiki Road (SH 56) to its intersection with Rangiotu Road. Addresses on Campbells Road and Syd Claridge Road are in zone. Addresses on Opiki Road south of its intersection with Te Rewa Road are not in zone. Addresses on Te Rewa Road are not in zone. Addresses on Poplar Road are in zone. No addresses on Okuku Road are in zone.
31. At the intersection of Opiki Road and Rangiotu Road, the zone travels west on Rangiotu Road to the starting point at the intersection of Rangiotu Road, Puketotara Road, and Pyke Road. Addresses on Alve Road, Riverbank Road, Te Awe Awe Road, and Puketotara Road are in zone.

## **In-Zone Enrolments**

Proof of residence within the home zone may be required.

Each year applications for enrolment in the following year from in-zone students will be sought by a date which will be published by notice in a media suitable for the local community. This will enable the school board to assess the number of places which can be made available to students who live outside the home zone. *(This paragraph is optional)*

## Special Programmes

The school operates the following special programme:

- Attached unit catering for high and very high ORS verified students.

Students must be ORS verified to be accepted into the programme.

Students who live within the school's home zone and meet the criteria for enrolment in the special programme will be enrolled ahead of out of zone students.

## Out of Zone Enrolments

Each year the board will determine the number of places, and the number of pre-enrolment periods, which are likely to be available in the following year for the enrolment of students who live outside the home zone. The school board will publish this information by notice in a media suitable for the school and wider local community. The notice will indicate how applications are to be made, the date by which all applications must be received, and the date any ballot will be held.

Applications for enrolment will be processed in the following order of priority, according to legislation:

**First Priority** Must be given to students who have been accepted for enrolment in the following special programme(s) run by the school and approved by the Secretary for Education:

Attached unit catering for high and very high ORS verified students.

**Second Priority** will be given to applicants who are siblings of current students.

**Third Priority** will be given to applicants who are siblings of former students.

**Fourth Priority** will be given to any applicant who is a child of a former student of the school.

**Fifth Priority** will be given to any applicant who is either a child of an employee of the board of the school or a child of a member of the board of the school.

**Sixth Priority** will be given to all other applicants.

Note: Applicants seeking second or third priority status may be required to give proof of a sibling relationship.

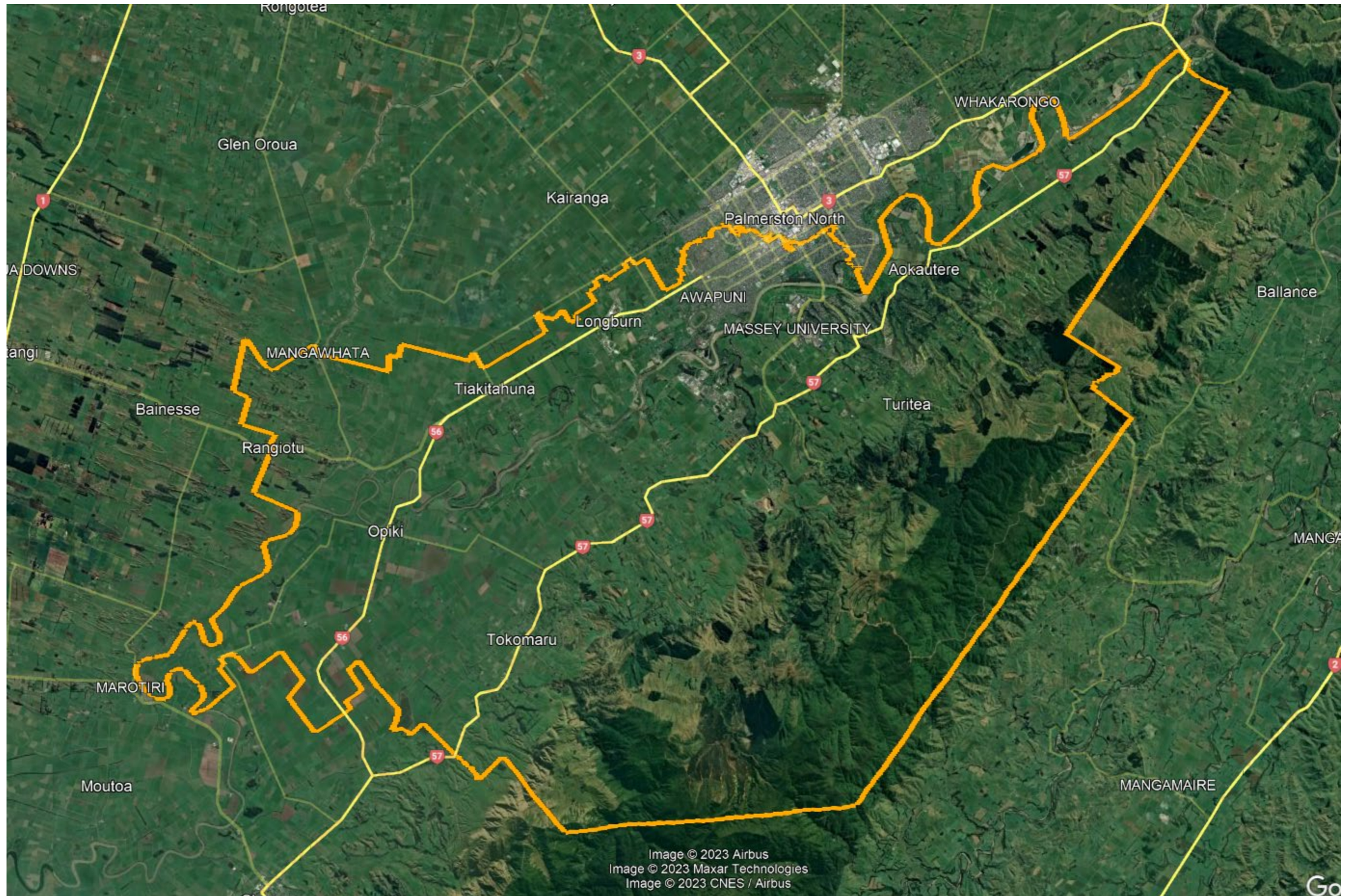
If there are more applicants in the first, second, third, fourth, fifth or sixth priority groups than there are places available, selection within the priority group will be by a ballot conducted in

accordance with instructions issued by the Secretary under Clause 3 Schedule 20 of the Education and Training Act 2020.

DRAFT



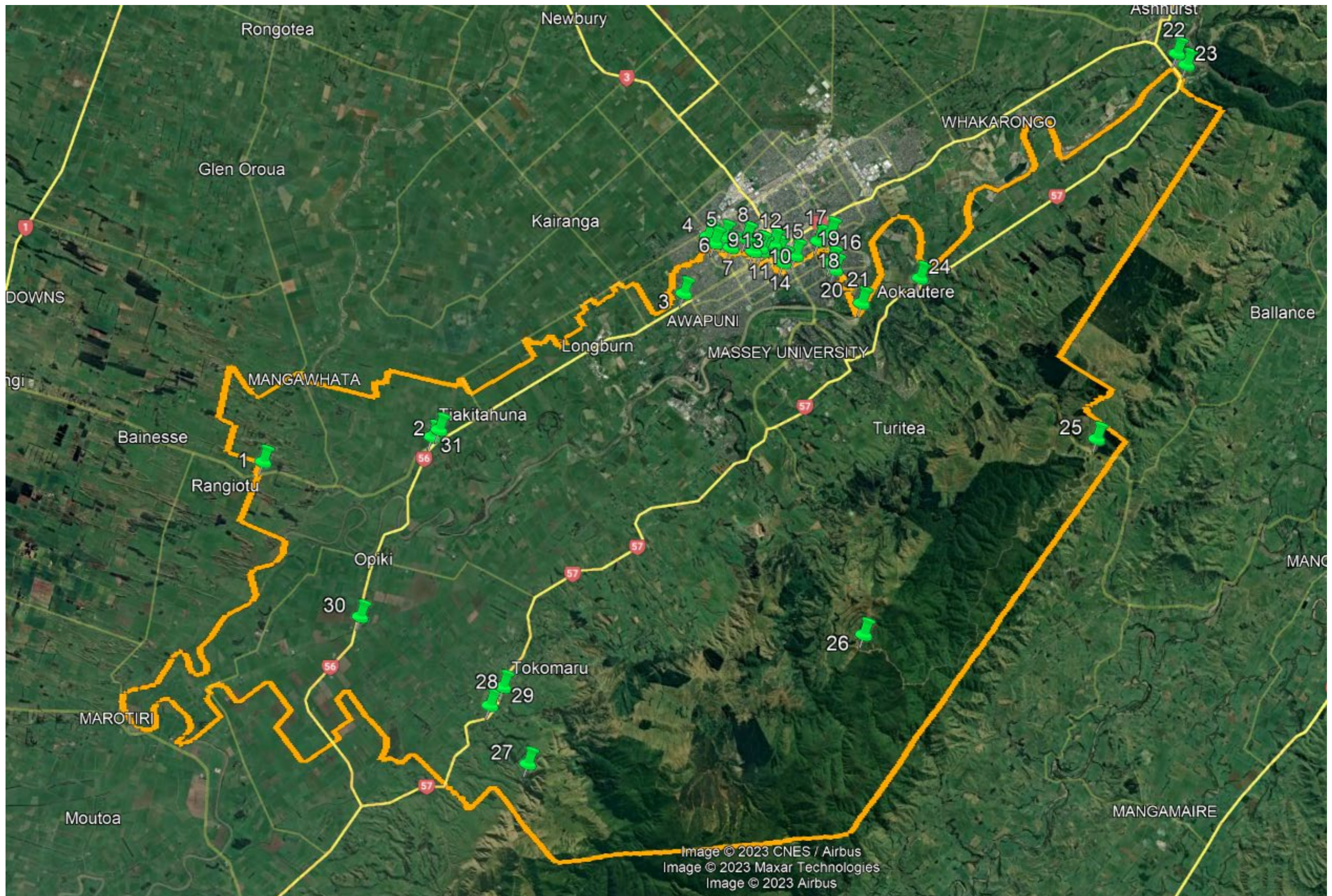
Draft Awatapu College Home Zone





### Draft Awatapu College Home Zone

(The number pins correspond to the numbered paragraphs in the home zone description above)





### Draft Awatapu College Home Zone

(The number pins correspond to the numbered paragraphs in the home zone description above)

