

Tawhiti School (#2248)
Draft Enrolment Scheme Description

Effective 14 October 2024

The guidelines for development and operation of enrolment schemes are issued under Schedule 20 of the Education and Training Act 2020 for the purpose of describing the basis on which the Secretary's powers in relation to enrolment schemes will be exercised.

Home Zone

All students who live within the home zone described below, and shown on the attached map, shall be entitled to enrol at the school. Both sides of each road are included in the zone unless otherwise stated.

In a clockwise direction:

1. The zone begins at the intersection of Glover Road and Railway Road and travels south on Glover Road to its intersection with Tawhiti Road. 99 and 36 Glover Road are in zone. Addresses on Railway Road are in zone.
2. From the intersection of Glover Road and Tawhiti Road, the zone follows Tawhiti Road north to its intersection with Ohangai Road and Ararata Road. All houses on Scott St, Burns St, Campbell St, Glasgow St, Wybourne Rd, Mason Rd, and Somerville Rd are in zone.
3. At the intersection of Tawhiti Road, Ohangai Road, and Ararata Road, the zone travels west on Ohangai Road to its intersection with Turuturu Road. Addresses on Turuturu Road south of Ohangai Road are not in zone.
4. From the intersection of Ohangai Road and Turuturu Road, the zone travels north on Turuturu Road and continues north on Austin Road to the intersection of Austin Road and Ngawhini Road. Addresses on Kingsford-Smith Drive are in zone. Addresses on Austin Road are not in zone.
5. At the intersection of Austin Road and Ngawhini Road, the zone travels north on Ngawhini Road to its intersection with Ararata Road.
6. From the intersection of Ngawhini Road and Ararata Road, the zone travels north the length of Ararata Road, and continues north on Makino Valley Road to the end of the road before returning south back to the intersection of Ararata, Tawhiti, and Ohangai Roads. Addresses on Panui Road, Tangahoe Valley Road (including Roimata Road, and Pukekino Road) are in zone. Addresses on Morea Road between Ararata Road and the northern boundary of 968 Morea Road are in zone.
7. From the intersection of Ararata, Tawhiti, and Ohangai Roads, the zone follows Ohangai Road east to its intersection with Katewheta Road. 960 Ohangai Road is in zone. 1037 Ohangai Road is not in zone. Addresses on Katewheta Road, Lander Road, and Lysaght Road are in zone.
8. From the intersection of Ohangai Road and Katewheta Road, the zone travels west back along Ohangai Road to its intersection with Matangarara Road.
9. At the intersection of Ohangai Road and Matangarara Road the zone travels south on Matangarara Road to its intersection with High Road. Addresses on Makowhai Road are in zone.
10. From the intersection of Matangarara Road and High Road, the zone travels west on High Road and continues on High Street to its intersection with Princes Street. Addresses on side roads south of High Street are not in zone.
11. At the intersection of High Street and Princes Street the zone travels north on Princes Street to its intersection with Nelson Street. Addresses on Napier Street are in zone.
12. From the intersection of Princes Street and Nelson Street, the zone travels west on Nelson Street to its intersection with Union Street. Number 27 Union Street is out of zone.

13. At the intersection of Nelson Street and Union Street, the zone follows Union Street north to its intersection with Wellington Street.
14. From the intersection of Union Street and Wellington Street the zone follows Wellington Street west to its intersection with Victoria Street. 79 Victoria Street is in zone.
15. At the intersection of Wellington Street and Victoria Street, the zone follows Victoria Street north to its intersection with Surrey Street.
16. From the intersection of Victoria Street and Surrey Street the zone follows Surrey Street west to its intersection with Argyle Street. Addresses on Surrey Street west of Argyle Street are not in zone. Addresses on Argyle Street south of Surrey Street are not in zone.
17. At the intersection of Surrey Street and Argyle Street, the zone follows Argyle Street north to its intersection with Glover Road. Addresses on Robbins Crescent are in zone.
18. From the intersection of Argyle Street and Glover Road, the zone follows Glover Street west to the start point at the intersection of Glover Road and Railway Road. Addresses on Wilson Street between Glover Road and Brydon Court are in zone (113 Wilson Street is in zone. Addresses Brydon Court are in zone). Addresses on Camberwell Road south to its intersection with Egmont Street are in zone (62 Camberwell Road is in zone).

In-Zone Enrolments

Proof of residence within the home zone may be required.

Each year applications for enrolment in the following year from in-zone students will be sought by a date which will be published by notice in a media suitable for the local community. This will enable the school board to assess the number of places which can be made available to students who live outside the home zone. *(This paragraph is optional)*

Out of Zone Enrolments (updated to new Act)

Each year the board will determine the number of places, and the number of pre-enrolment periods, which are likely to be available in the following year for the enrolment of students who live outside the home zone. The school board will publish this information by notice in a media suitable for the school and wider local community. The notice will indicate how applications are to be made, the date by which all applications must be received, and the date any ballot will be held.

Applications for enrolment will be processed in the following order of priority, according to legislation:

- | | |
|-------------------------------|---|
| <u>First Priority</u> | <i>This priority category is not applicable to this school as it does not operate a special programme approved by the Secretary of Education.</i> |
| <u>Second Priority</u> | will be given to applicants who are siblings of current students. |
| <u>Third Priority</u> | will be given to applicants who are siblings of former students. |
| <u>Fourth Priority</u> | will be given to any applicant who is a child of a former student of the school. |
| <u>Fifth Priority</u> | will be given to any applicant who is either a child of an employee of the board of the school or a child of a member of the board of the school. |

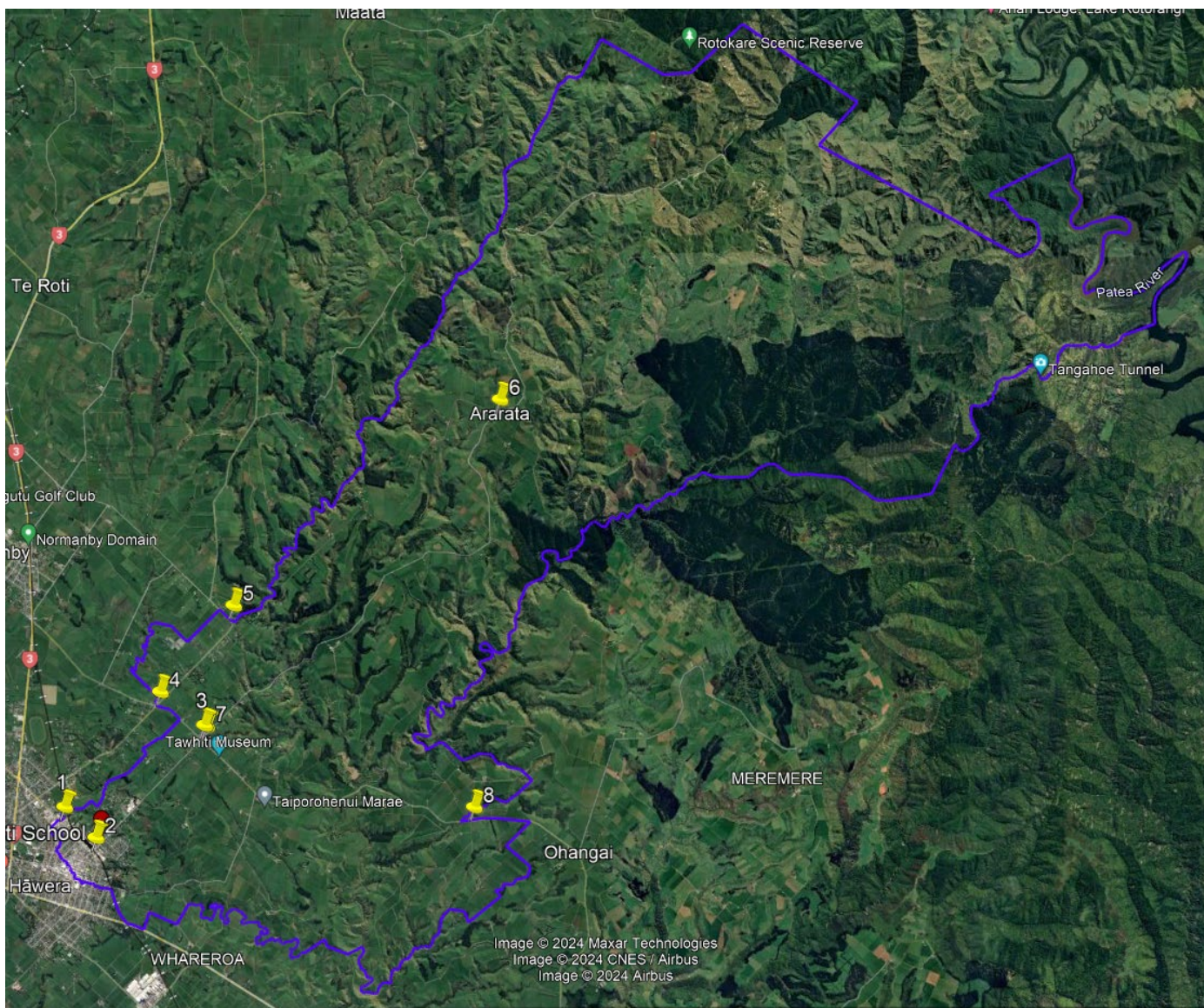
Sixth Priority will be given to all other applicants.

Note: Applicants seeking second, or third priority status, may be required to give proof of a sibling relationship.

If there are more applicants in the second, third, fourth, fifth or sixth priority groups than there are places available, selection within the priority group will be by a ballot conducted in accordance with instructions issued by the Secretary under clause 3 schedule 20 of the Education and Training Act 2020.

DRAFT

Proposed Enrolment Scheme Home Zone for Tawhiti School



- Tawhiti School proposed home zone boundary shown in purple.
- Note: The numbered pins correspond with the numbered paragraphs in the written description.

Proposed Enrolment Scheme Home Zone for Tawhiti School



- Tawhiti School proposed home zone boundary shown in purple.
- Note: The numbered pins correspond with the numbered paragraphs in the written description.