

**Terrace End School (#2466)**  
**Draft Enrolment Scheme Description**  
**Effective 1 January 2025**

The guidelines for development and operation of enrolment schemes are issued under Schedule 20 of the Education and Training Act 2020 for the purpose of describing the basis on which the Secretary's powers in relation to enrolment schemes will be exercised.

**Home Zone**

All students who live within the home zone described below, and shown on the attached map, shall be entitled to enrol at the school. Both sides of each road are included in the zone unless otherwise stated.

In a clockwise direction:

1. The zone begins at the intersection of Victoria Avenue and Grey Street and travels east on Grey Street to its intersection with Rangitane street. Addresses on Grey Street west of its intersection with Victoria Avenue are not in zone. Addresses on Russell Street are not in zone.
2. From the intersection of Grey Street and Rangitane Street, the zone follows Rangitane Street north to its intersection with Albert Street.
3. At the intersection of Rangitane Street and Albert Street, the zone travels north on Albert Street to its intersection with Featherston Street. Addresses on Featherston Street west of Albert Street are not in zone.
4. From the intersection of Albert Street and Featherston Street, the zone travels east on Featherston Street to its intersection with Ruahine Street. Addresses on Heretaunga Street north of Featherston Street are not in zone.
5. From the intersection of Featherston Street and Ruahine Street the zone extends north along Ruahine Street to its intersection with Tremain Avenue, and includes all residential addresses on: Bodell Place, Clendon Court, Terrace Street, Newhaven Place, Puriri Terrace and Woodfield Avenue. Addresses on Tremain Avenue are not in zone.
6. From the Intersection of Ruahine Street and Tremain Avenue, the zone returns south along Ruahine Street back to its intersection with Featherston Street.
7. At the intersection of Ruahine Street and Featherston Street, the zone travels east on Featherston Street to its intersection with Belfast Place. Addresses on Freyberg Street, Fraser Court, and Sierra Court are in zone. 599 Featherston Street is in zone. Addresses on Featherston Street east of 599 Featherston Street, or Belfast Place are not in zone.
8. At the intersection of Belfast Place and Featherston Street, the zone travels south through Norton Park to Andrew Avenue.

9. From Andrew Avenue adjacent to Norton Park, the zone follows Andrew Avenue north to its intersection with Vogel Street. Addresses on Elliot Street are not in zone. Addresses on Vogel Street are not in zone.
10. At the intersection of Andrew Avenue and Vogel Street, the zone follows Andrew Avenue south to the intersection of Andrew Avenue, Rangiora Avenue, and Upham Terrace; and then continues south on Upham Terrace to its intersection with Main Street. Addresses on Hulme Street, Rangiora Avenue, and Ngarimu Street are in zone. Addresses on Vogel Street are not in zone.
11. At the intersection of Upham Terrace and Main Street, the zone follows Main Street east to its intersection with Upper Main Street where it continues east to the intersection of Upper Main Street and Vogel Street. Only addresses on the northern side of Main Street are in zone. Addresses on Karina Terrace are in zone. Addresses on Vogel Street are not in zone.
12. From the intersection of Upper Main Street and Vogel Street, the zone travels back west along Upper Main Street, and then Main Street, to the intersection of Main Street and Fitzroy Street. Only addresses on the northern side of Main Street are in zone.
13. At the intersection of Main Street and Fitzroy Street, the zone follows Fitzroy Street south to its intersection with Church Street. Addresses on Frederick Street are not in zone. Addresses on Fitzroy Street south of its intersection with Church Street are not in zone.
14. From the intersection of Fitzroy Street and Church Street, the zone follows Church Street west to its intersection with McArthur Street. Addresses on Ruahine Street north of its intersection with Ferguson Street are in zone. Addresses on Edwards Place, Kopeka Court, Seville Court, and Summerhays Street are in zone. Addresses on Ferguson Street are not in zone. Addresses on Church Street west of McArthur Street are not in zone.
15. At the intersection of Church Street and McArthur Street, the zone travels north on McArthur Street to its intersection with Main Street.
16. From the intersection of McArthur Street and Main Street, the zone follows Main Street west to its intersection with Victoria Avenue. Addresses on Albert Street and Victoria Avenue south of their intersections with Main Street are not in zone.
17. At the intersection of Main Street and Victoria Avenue, the zone travels north on Victoria Avenue returning to the start point at the intersection of Victoria Avenue and Grey Street. Addresses on Broadway Avenue west of its intersection with Victoria Avenue are not in zone.

### **In-Zone Enrolments**

Proof of residence within the home zone may be required.

Each year applications for enrolment in the following year from in-zone students will be sought by a date which will be published by notice in a media suitable for the local community. This will enable the school board to assess the number of places which can be made available to students who live outside the home zone. *(This paragraph is optional)*

## **Out of Zone Enrolments (updated to new Act)**

Each year the board will determine the number of places, and the number of pre-enrolment periods, which are likely to be available in the following year for the enrolment of students who live outside the home zone. The school board will publish this information by notice in a media suitable for the school and wider local community. The notice will indicate how applications are to be made, the date by which all applications must be received, and the date any ballot will be held.

Applications for enrolment will be processed in the following order of priority, according to legislation:

<b><u>First Priority</u></b>	<i>This priority category is not applicable to this school as it does not operate a special programme approved by the Secretary of Education.</i>
<b><u>Second Priority</u></b>	will be given to applicants who are siblings of current students.
<b><u>Third Priority</u></b>	will be given to applicants who are siblings of former students.
<b><u>Fourth Priority</u></b>	will be given to any applicant who is a child of a former student of the school.
<b><u>Fifth Priority</u></b>	will be given to any applicant who is either a child of an employee of the board of the school or a child of a member of the board of the school.
<b><u>Sixth Priority</u></b>	will be given to all other applicants.

Note: Applicants seeking second, or third priority status, may be required to give proof of a sibling relationship.

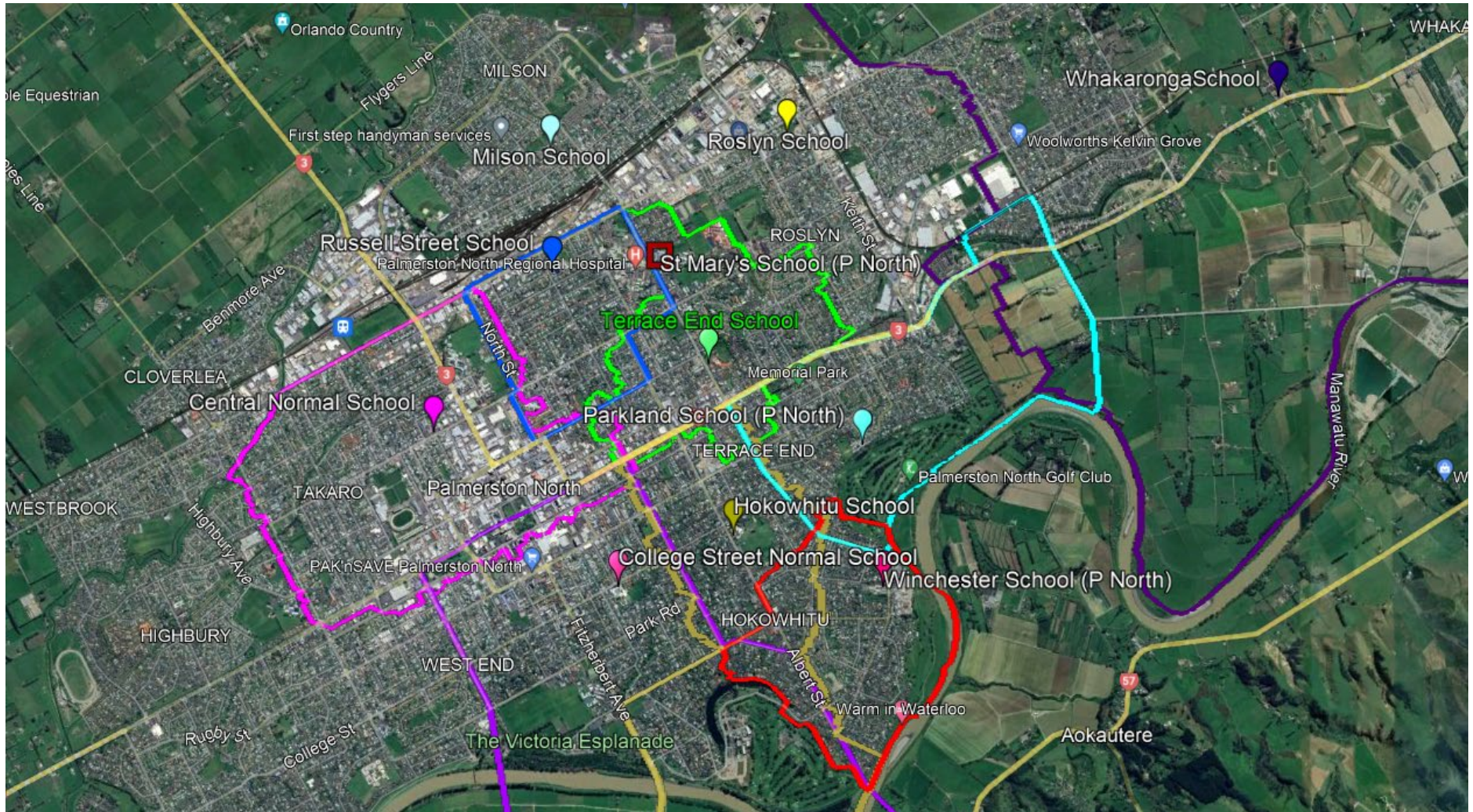
If there are more applicants in the second, third, fourth, fifth or sixth priority groups than there are places available, selection within the priority group will be by a ballot conducted in accordance with instructions issued by the Secretary under clause 3 schedule 20 of the Education and Training Act 2020.

### Proposed Enrolment Scheme Home Zone for Terrace End School



- Terrace End School proposed home zone boundary shown in green.
- Note: The numbered pins correspond with the numbered paragraphs in the written description.

### Proposed Enrolment Scheme Home Zone for Terrace End School



Overview of the proposed home zone for Terrace End School in relation to surrounding schools and existing enrolment scheme home zones.