



# The Terrace School (Alexandra)

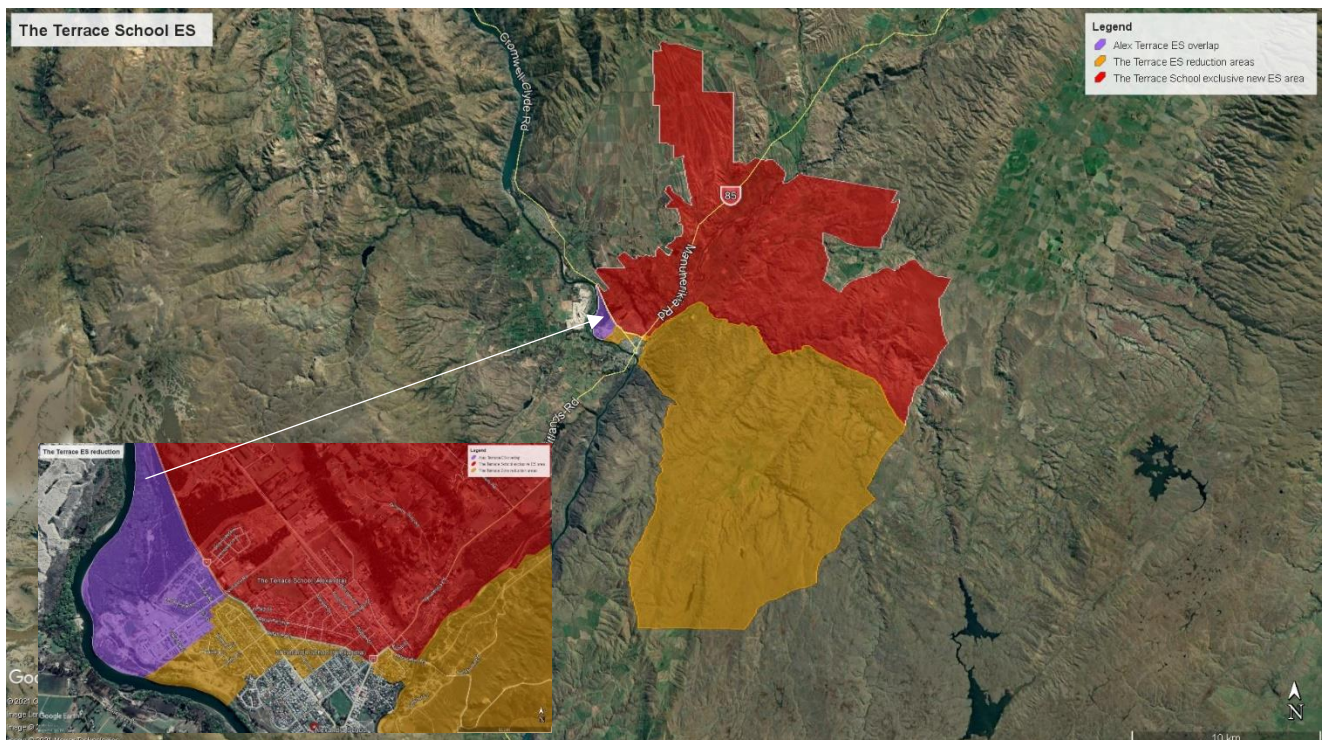
## Amendment of Enrolment Scheme

### Overview – what is changing?

The Ministry of Education is proposing to establish a new enrolment scheme for Alexandra Primary school and will also need to amend the existing enrolment scheme for The Terrace School.

The Ministry is proposing to reduce The Terrace School home zone, to reflect the introduction of the new Alexandra School zone. The proposed scheme and full written description can be found [here](#). Changes include:

- Centennial Ave from Killarney Street to Brandon Street is removed from The Terrace School zone, and becomes part of the Alexandra School home zone. Killarney Street from Centennial Ave to Tarbert Street (SH 85) becomes the new boundary area.
- The area east of Tarbert Street (SH 85) including Graveyard Gully Road, Little Valley Road and Tucker Hill Road and Lookout Drive have been removed and becomes part of the Alexandra School home zone.
- The area west of Centennial Ave from Matau Street to Boundary Road has been removed and becomes part of the Alexandra School home zone.
- The area west of Centennial Ave from Boundary Road heading north remain in The Terrace School zone, but will also be included in the Alexandra School zone (overlapping area is coloured purple in insert map).

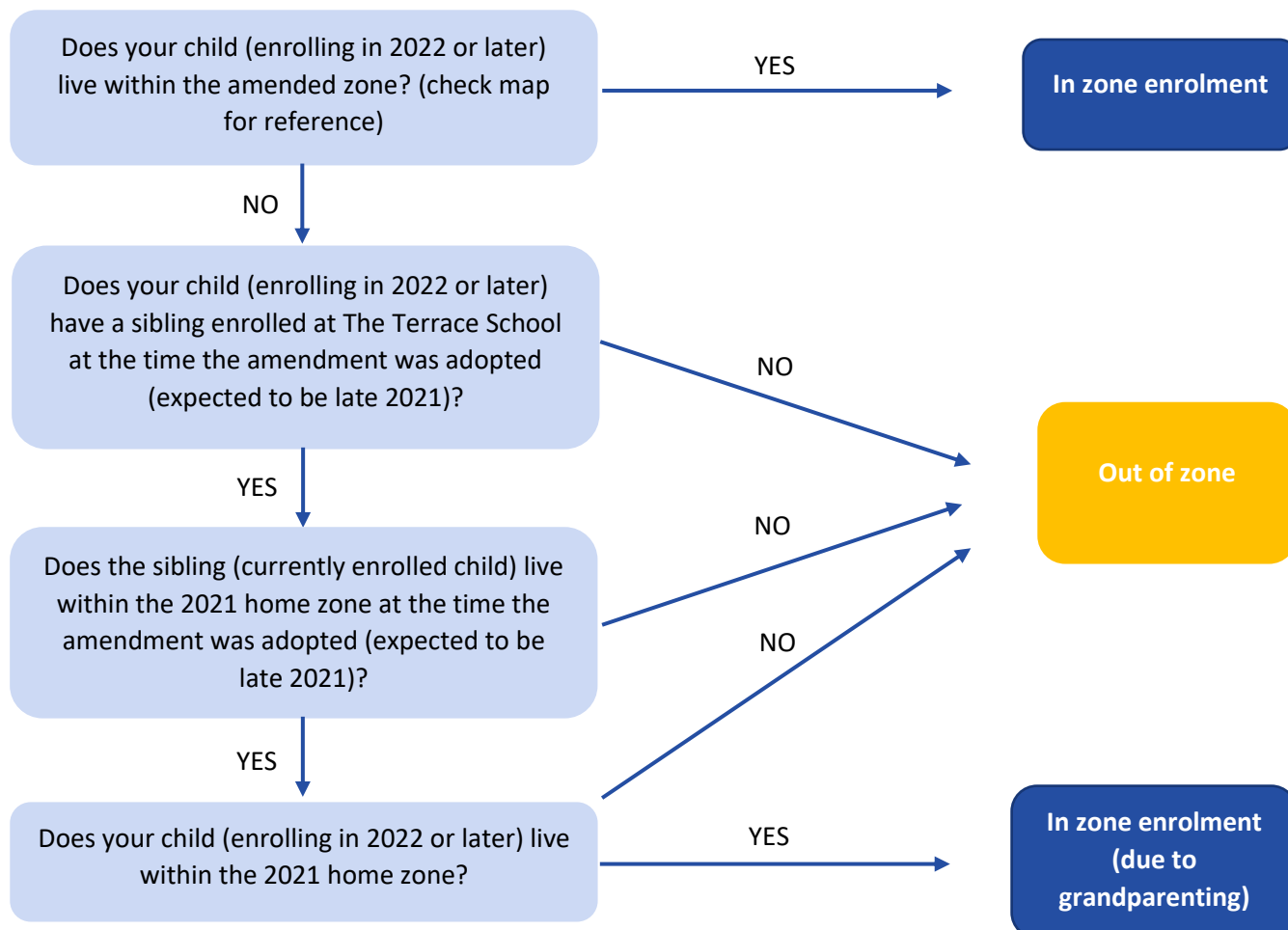


The Ministry is also considering including a transitional arrangement to minimise the impact for current families. This is a new process included in the Education and Training Act 2020 and will allow siblings of current students to retain the right to enrol at The Terrace School in the future, provided certain criteria are met.

## What does this mean for my family?

Any student currently enrolled at The Terrace School will not be impacted by a change to the enrolment scheme. All students enrolled (and have started attending) will be entitled to continue attending The Terrace School, irrespective of where they currently live.

The change to the home zone will affect all enrolments starting in 2022. It is important to note that enrolment starts when you first attend school, not when enrolment forms are completed. This means the changes will include current families who have a younger sibling looking to enrol at The Terrace School, and will start school in 2022 or later. The flowchart below will help you assess your indicative eligibility to enrol from 2022. There are also scenarios available to view [here](#) that shows how this works in practice.



## Consultation process and timeline

The Ministry of Education is currently undertaking consultation about the proposed changes and new enrolment schemes. You can have your say by:

- Completing the survey at <https://consultation.education.govt.nz/education/es-alexandra>
- Meeting with a Facilitator to discuss the proposed changes and how these may impact you at a public meeting or at one of the parent information sessions on 22-22 June 2021. Check [here](#) for further details.
- Emailing [otagosouthland.enrolmentschemes@education.govt.nz](mailto:otagosouthland.enrolmentschemes@education.govt.nz) if you have further questions or comments

Consultation will run until the 23 July 2021. The Ministry will consider all feedback and liaise with The Terrace School Board before making a final decision. We expect the School community to be updated about progress made towards the end of Term 3. The new schemes and changes will come into effect for the beginning of 2022.